



Exploring Innovations in Universities, the Humanities, and the Social Sciences for Improving Social Innovation



Prof. Jonathan Chang
(Singapore Management University)

As the market, government, and non-profit sector (civil society) on their own have failed to deal with various global issues and social problems, expectations run high for so-called "social innovation," a new approach that incorporates: (1) determining a "social mission" infused with a sense of crisis, (2) promoting sustainable business capability, and (3) encouraging new inventive activities and methods that accompany new social values.

Social innovation is considered to be an attempt to solve social problems by commercial capital and/or business methods, for example. But it is beyond that. It could be a trigger for a full societal "shift" caused by social and policy changes.

Before further expanding this new approach to various issue areas, however, we first need to accurately identify the logics and actual mechanisms, and to measure the impact of social innovation and investment on policy outcomes.

The central aim of the symposium is to explore how the humanities, the social sciences, and universities can contribute to improving the capacity of policy innovation as a result.



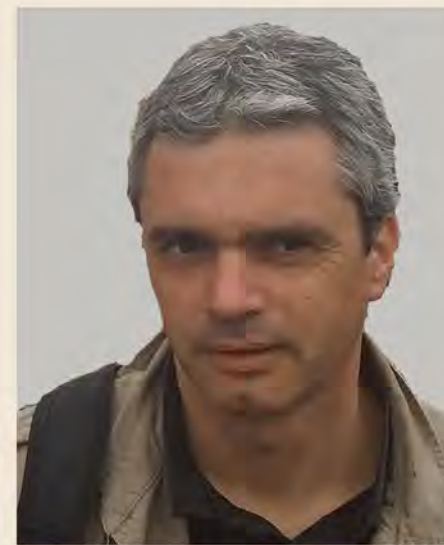
Prof. Ruijun Yuan
(Peking University)



Prof. Francis Jae-ryong Song
(Kyung Hee University, Korea)



Dr. Grace Chang-yu Huang
(Eden Social Welfare Foundation, Taiwan)



Prof. Xabier Itçaina
(University of Bordeaux, France)

Tsukuba Global Science Week (TGSW) 2016

Saturday, September 17, 13:30 - 16:30

Tsukuba International Congress Center, Room 403





ICR Special Symposium



Exploring Innovations in Universities, the Humanities, and the Social Sciences for Improving Social Innovation

Session Organizer: Yutaka Tsujinaka		
Sep 17 (Sat) Conference Room 403		
Part One Chairs: Joji Kijima, Takafumi Ohtomo University of Tsukuba		
13:30-13:40	Yutaka Tsujinaka Opening Remarks	University of Tsukuba
13:40-14:00	Jonathan Chang "Leadership and Impact through Social Innovation"	Lien Centre for Social Innovation
14:00-14:20	Ruijun Yuan "On Identity and Certification System Models of Social Enterprise: A Transnational Analysis"	Peking University
14:20-14:40	Grace Huang "From the Soil: Exploring Social Innovation in Disaster-Affected Communities"	Eden Social Welfare Foundation
14:40-15:00	Xabier Itçaina "Territorial Mobilizations, Social Economy and Social Innovation in Southern Europe: Lessons from the Basque Case"	Sciences Po Bordeaux
15:00-15:15	Break	
15:15-15:35	Song Jae-Ryong "The Cultural Disposition and Social Innovation: With Reference to Kim Young Ran Anti-Corruption and Bribery Law"	Kyung Hee University
15:35-15:50	Yutaka Tsujinaka Discussion 1	University of Tsukuba
15:50-16:05	TBA Discussion 2	
16:05-16:30	Q&A	



Prof. Jonathan Chang
(Singapore Management University)

Jonathan Chang is the Executive Director of Lien Centre for Social Innovation and an Adjunct Professor of Social Entrepreneurship at Singapore Management University, with interests in entrepreneurship, social policy, and government. He pioneered Ashoka Changemaker Campus accreditation for SMU, the first and only university in Asia to receive the honor. He is the Harvard Kennedy School Ambassador to Singapore, and a member of HKS Alumni Board of Directors.

Prior to Singapore, Jonathan founded and co-founded four startups across multiple industries in Silicon Valley and Manhattan. He gave a TEDx talk at Harvard about the importance of a mission-driven life. He earned his degrees from UC Berkeley, Stanford Graduate School of Business, and Harvard Kennedy School of Government. He received Stanford's Miller Social Change Leadership Award, and was selected as the Harvard Law School's Digital Problem Solving Initiative Fellow.



Prof. Ruijun Yuan
(Peking University)

Ruijun Yuan is associate Professor of School of Government at Peking University. Her research focuses on state-society relationship and comparative government and politics. She currently acts as the director of Center for Civil Society Studies at PKU and leads some research programs on the development of social innovation focused on some issues such as certification of social Enterprise, impact investment developmental report, and impact assessment tools development. She has co-chaired four sessions on social enterprise and social innovation at Beijing Forum since 2012. She is co-editor of *The Blue Book of the Civil Society in China* (PKU Press, 2008). She holds BA, MA and DR from Peking University.



Prof. Xabier Itçaina
(University of Bordeaux, France)

Xabier Itçaina is a Senior Research Fellow in political science at the CNRS, Centre Emile Durkheim, Sciences po Bordeaux. His research is concerned with three areas: politics of Catholicism in Southern Europe; territorial dynamics of social economy; identity politics in the Basque Country. Among his publications are: with A. Roger and A. Smith, *Varietals of capitalism. A political economy of the changing wine industry* (Cornell University Press, 2016); "The crisis as a constrained opportunity? Catholic organizations and territorial welfare in the Basque Country and Emilia-Romagna", *Religion, State and Society*, 43(2) (2015); "Political Agency in the Economy: Cooperatives, Solidarity and Territory in Euskadi and Aquitaine", in B. Maiguaschca, R. Marchetti (eds.), *Contemporary Political Agency* (Routledge 2013).



Dr. Grace Chang-yu Huang
(Eden Social Welfare Foundation, Taiwan)

Grace Chang-Yu Huang is currently a practitioner of a not-for profit organization in Taiwan. With academic training in social work (B.A.), social anthropology (M.S.S.), and business management (Ph.D.), interest areas are social entrepreneurship, social enterprise, and social innovation.



Prof. Francis Jae-ryong Song
(Kyung Hee University, Korea)

Dr. Song is Professor of Sociology Department and Dean of Graduate School, Kyung Hee University. He is currently Chairman of Korean Association for Sociology of Religion. Dr. Song received his Msc. and Ph.D. from University of Bristol, UK. His research interests lie with a liberal communitarian view in such areas as culture, religion, ethics and knowledge. He is author of *Religion and Social Progress* (co-authored); *Communitarianism in the Postmodern Culture* (sole-authored). He has recently published some translated books, including *Varieties of Religion Today* (Charles Taylor) and *On Secularization* (David Martin). His recent papers include, "Between Two Language Games: Religious Competition between Confucianism and Christianity", "Peter Winch's Theory of 'Rule-following' and Its Sociological Implications".



9/17-9/19

No
Registration
Fee!

All
Sessions
Open to the
Public!

Great
Network-
ing
Opportunity!

Discover
Your Potential
Collabo-
rators!

